

# InDIAGO 510

Diagonal lifting system for wall cabinets



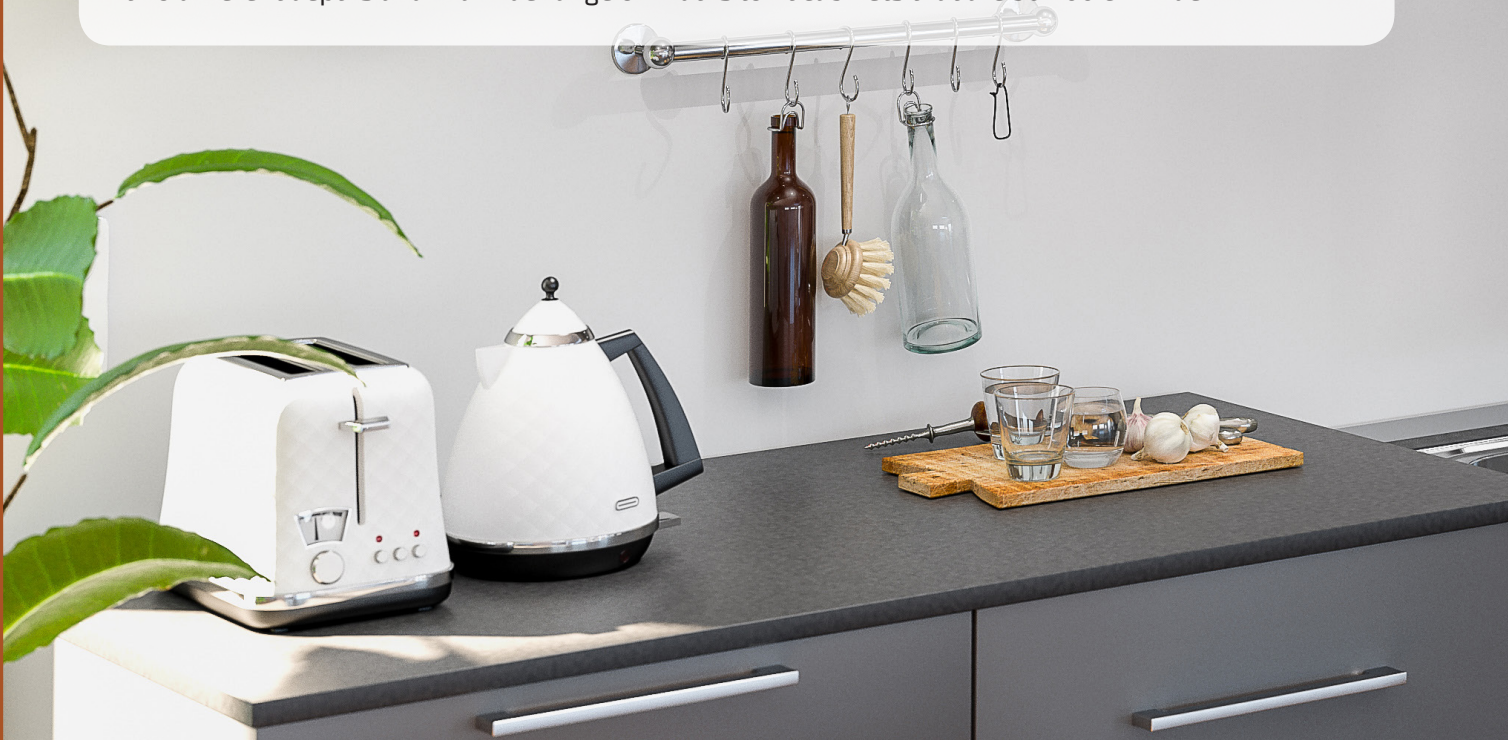
InDIAGO is a motorised lifting system mounted inside the wall cabinet. The system moves out and down in an arc-shape (diagonal) movement to the front of the work surface, at the touch of a button.

The movement can be stopped at any height. It enables the user to access contents of cabinet in an easy and safe manner, either standing or seated positions.

It is easily mounted in existing or new cabinets without the bottom of the cabinet having to be removed. Strip lighting underneath is not affected by the lift as the bottom of the cabinet is left intact.

The system also includes a function that automatically opens the doors when the unit is lowered. When the unit goes back into the cabinet, it slows down to let the doors close gently. The ingenious design also makes it possible to open the doors as usual when the unit is in the raised position.

The cabinet unit is available in two heights that fit 70 cm or 85 cm high cabinets. The lift is available in two different depths and in a wide range of widths to fit cabinets that are 50-100 cm wide.



It is easy to reach the contents since the unit comes forward when lowered. The mechanics and motors are barely visible when the frame is lowered.





There is plenty of room for the mixer tap and other objects on the worktop when the frame is in the lowered position.



The mechanics and motors are optimally positioned so as to take up as little space as possible inside the cabinet.



### Functions and advantages

- Lowers the cabinet unit diagonally downwards and forwards to the front of the top board
- Easy to reach the contents since the unit moves forward as it is lowered
- When lowered, the cabinet unit passes in front of the mixer tap
- Easily mounted in new or existing cabinets without the bottom having to be removed. Strip lighting and light ramps are not affected
- Motor-driven automation that opens and closes the doors
- The lifting units are easily mounted in the cabinet. The lift is screwed to the inside of the cabinet
- The cabinet unit is delivered ready-mounted. Available in widths 50-100 cm
- The mechanics take up minimal space in the cabinet. Plates with a diameter of up to 29 cm can fit into the unit

### Standard equipment

- Control button
- Safety switch under the cabinet unit
- Motor-driven automation that opens and closes the doors

### Recommended additional options

- Lighting (mounted under the cabinet)

### Useful information

- Motorised, steplessly adjustable 540 mm downwards, 373 mm outwards
- Model 510A fits cabinets with an inner depth of 260-309 mm. The shelf depth is 230 mm
- Model 510B fits inside cabinets with a depth of minimum 310 mm. The depth of the shelf is 280 mm
- Available in two heights that fit a cabinet height of 700 mm or 850 mm (or higher)
- Electronics and motor system "Plug and Play"

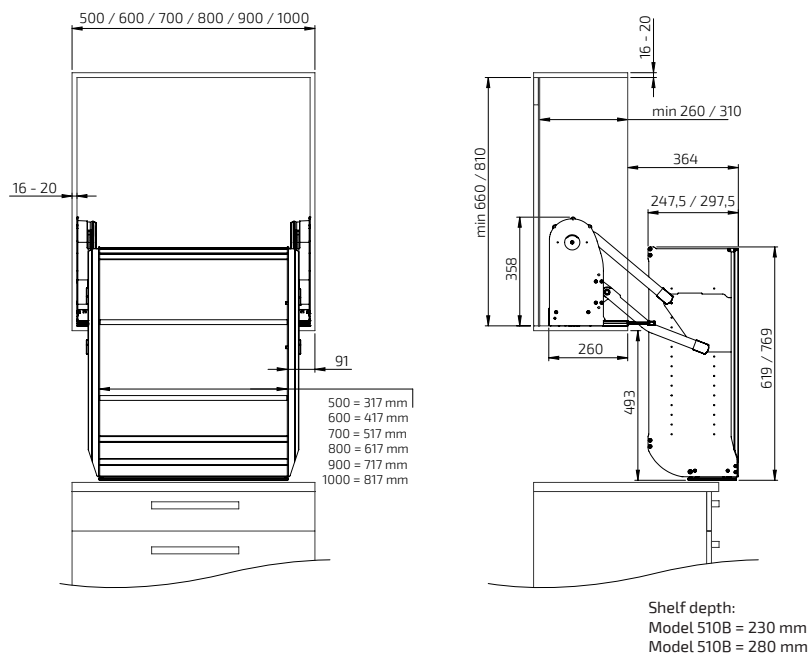


### Specifications

<b>Lift model</b>	Diagonal lifting system for wall cabinets
<b>Height adjustment</b>	Motorised, steplessly adjustable 540 mm downwards, 373 mm outwards
<b>Speed</b>	23 mm/sec.
<b>Manoeuvring</b>	Wired button
<b>Automatic doors</b>	Motor-driven automation that opens and closes the doors
<b>Safety</b>	Safety plate under the lifting system. If anything touches the plate, the lift stops.
<b>Electricity connection</b>	Plug for 230 V, Max 2.0 A
<b>Lifting power</b>	40 kg
<b>IP Class</b>	IP30
<b>Height</b>	660 / 810 mm
<b>Fits cabinets with width</b>	500 - 1000 mm
<b>Fits cabinets with height</b>	700 cm or higher
<b>Fits cabinets with inner depth</b>	InDIAGO 510KA / 510SA: 260 - 309 mm, InDIAGO 510KB / 510SB: From 310 mm
<b>Fits cabinet frames with side thickness</b>	16-20 mm
<b>Material specifications</b>	Cabinet lifting system in powder-lacquered aluminium (white). Back and ceiling of HDF. Shelves of white melamine (16 mm). Powder-lacquered sheet metal parts (white)
<b>Warranty</b>	2 year
	<b>CE</b>

### Measurement data

(mm)





**InDIAGO 510, height 70.0 cm**  
- Fixed button

**Delivery includes:**

- Lifting unit
- Control unit and transformer
- Control button in ALU-design
- Automatic doors

**Measurement data:**

- Cabinet width: 50.0-100.0 cm
- Cabinet height: 70.0-84.0 cm
- Fits cabinet frame: 1.6-2.0 cm

**InDIAGO 510KA: 26.0 cm deep:**

Fits cabinets with inner depth: 26.0 - 30.9 cm

**InDIAGO 510KB: 31.0 cm deep:**

Fits cabinets with inner depth: From 31.0 cm



**InDIAGO 510, height 85.0 cm**  
- Fixed button

**Delivery includes:**

- Lifting unit
- Control unit and transformer
- Control button in ALU-design
- Automatic doors

**Measurement data:**

- Cabinet width: 50.0-100.0 cm
- Cabinet height: 85.0 cm or higher
- Fits cabinet frame: 1.6-2.0 cm

**InDIAGO 510SA: 26.0 cm deep:**

Fits cabinets with inner depth: 26.0 - 30.9 cm

**InDIAGO 510SB: 31.0 cm deep:**

Fits cabinets with inner depth: From 31.0 cm



	Cabinet width (cm)	Shelf width (cm)	Depth (cm)	Art. no.
Width of lift 46.0 cm	50.0	33.0	26.0	510KA-050-01
Width of lift 56.0 cm	60.0	43.0	26.0	510KA-060-01
Width of lift 66.0 cm	70.0	53.0	26.0	510KA-070-01
Width of lift 76.0 cm	80.0	63.0	26.0	510KA-080-01
Width of lift 86.0 cm	90.0	73.0	26.0	510KA-090-01
Width of lift 96.0 cm	100.0	83.0	26.0	510KA-100-01
Width of lift 46.0 cm	50.0	33.0	31.0	510KB-050-01
Width of lift 56.0 cm	60.0	43.0	31.0	510KB-060-01
Width of lift 66.0 cm	70.0	53.0	31.0	510KB-070-01
Width of lift 76.0 cm	80.0	63.0	31.0	510KB-080-01
Width of lift 86.0 cm	90.0	73.0	31.0	510KB-090-01
Width of lift 96.0 cm	100.0	83.0	31.0	510KB-100-01

	Cabinet width (cm)	Shelf width (cm)	Depth (cm)	Art. no.
Width of lift 46.0 cm	50.0	33.0	26.0	510SA-050-01
Width of lift 56.0 cm	60.0	43.0	26.0	510SA-060-01
Width of lift 66.0 cm	70.0	53.0	26.0	510SA-070-01
Width of lift 76.0 cm	80.0	63.0	26.0	510SA-080-01
Width of lift 86.0 cm	90.0	73.0	26.0	510SA-090-01
Width of lift 96.0 cm	100.0	83.0	26.0	510SA-100-01
Width of lift 46.0 cm	50.0	33.0	31.0	510SB-050-01
Width of lift 56.0 cm	60.0	43.0	31.0	510SB-060-01
Width of lift 66.0 cm	70.0	53.0	31.0	510SB-070-01
Width of lift 76.0 cm	80.0	63.0	31.0	510SB-080-01
Width of lift 86.0 cm	90.0	73.0	31.0	510SB-090-01
Width of lift 96.0 cm	100.0	83.0	31.0	510SB-100-01



**InDIAGO 510KA - 26.0 cm depth**  
Fits cabinets with depth: 26.0-30.9 cm  
Fits cabinets with height: 70.0-84.0 cm

Width of lift 46.0 cm	510KA-050
Width of lift 56.0 cm	510KA-060
Width of lift 66.0 cm	510KA-070
Width of lift 76.0 cm	510KA-080
Width of lift 86.0 cm	510KA-090
Width of lift 96.0 cm	510KA-100

**InDIAGO 510KB - 31.0 cm depth**  
Fits cabinets with depth: From 31.0 cm  
Fits cabinets with height: 70.0-84.0 cm

Width of lift 46.0 cm	510KB-050
Width of lift 56.0 cm	510KB-060
Width of lift 66.0 cm	510KB-070
Width of lift 76.0 cm	510KB-080
Width of lift 86.0 cm	510KB-090
Width of lift 96.0 cm	510KB-100



**InDIAGO 510SA - 26.0 cm depth**  
Fits cabinets with depth: 26.0-30.9 cm  
Fits cabinets with height: 85.0 cm or higher

Width of lift 46.0 cm	510SA-050
Width of lift 56.0 cm	510SA-060
Width of lift 66.0 cm	510SA-070
Width of lift 76.0 cm	510SA-080
Width of lift 86.0 cm	510SA-090
Width of lift 96.0 cm	510SA-100

**InDIAGO 510SB - 31.0 cm depth**  
Fits cabinets with depth: From 31.0 cm  
Fits cabinets with height: 85.0 cm or higher

Width of lift 46.0 cm	510SB-050
Width of lift 56.0 cm	510SB-060
Width of lift 66.0 cm	510SB-070
Width of lift 76.0 cm	510SB-080
Width of lift 86.0 cm	510SB-090
Width of lift 96.0 cm	510SB-100



**Control button, Mini**  
Wired, for recessed mounting  
Diameter: 20 mm

61316



**Control button in ALU-design**  
Wired, for recessed mounting  
Dimensions: 82 x 82 x 17 mm

61210



**Extension frame for aluminium button**  
Enables surface mounting of aluminium buttons.  
Colour: White  
Dimensions: 82 x 82 x 52 mm

61355



**Multi-compartment frame, ALU-design**  
Collects power socket, power switch or control buttons in a multi-compartment frame

Two-compartment frame:  
153 x 82 x 9 mm

61352

Three-compartment frame:  
225 x 82 x 9 mm

61353



**GRANBERG INTERIOR AB**  
Box 6112  
600 06 Norrköping  
Sweden  
Tel: +46(0)11-19 77 50  
Email: [info@granberg.se](mailto:info@granberg.se)  
Internet: [www.granberg.se](http://www.granberg.se)

SINCE 1870



**Distributor/Dealer in Australia**



**Inclusive Living**  
Australia

Tel: +61 1300 304 330  
E-mail: [sales@inclusiveliving.com.au](mailto:sales@inclusiveliving.com.au)  
Internet: <http://www.inclusiveliving.com.au>

**Inclusive Living**  
Australia  
[www.inclusiveliving.com.au](http://www.inclusiveliving.com.au)  
**1300 304 330**